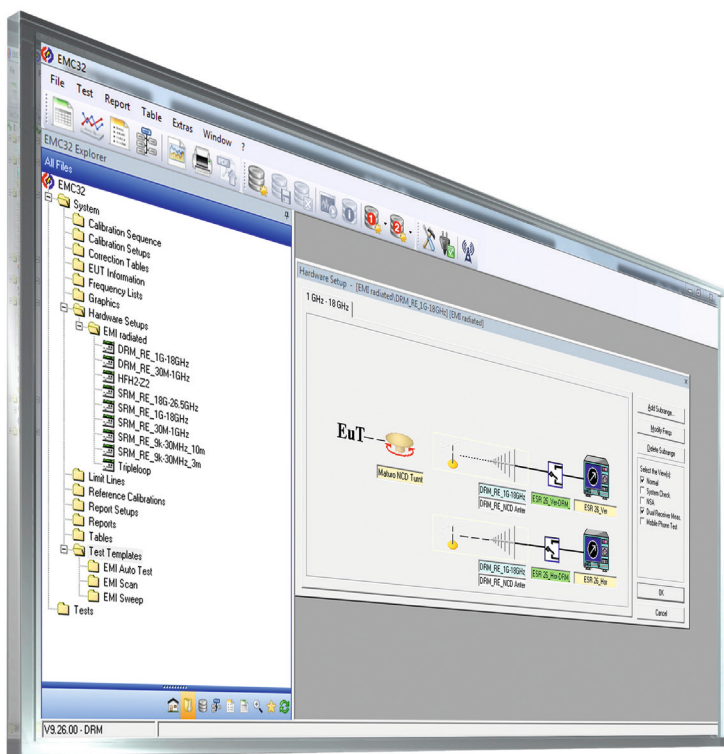


R&S®EMC32-K27 Dual Receiver Measurement (DRM)

Swift and reliable measurements with efficient dual receiver setup

The R&S®EMC32-K27 software option offers a versatile measurement mode while reducing measurement time, making it ideal for optimizing equipment usage efficiency. The R&S®EMC32-K27 option further enhances the capabilities of the system by enabling dual receiver mode measurements in test sequences.



R&S®EMC32-K27

Dual Receiver Measurement (DRM)

At a glance

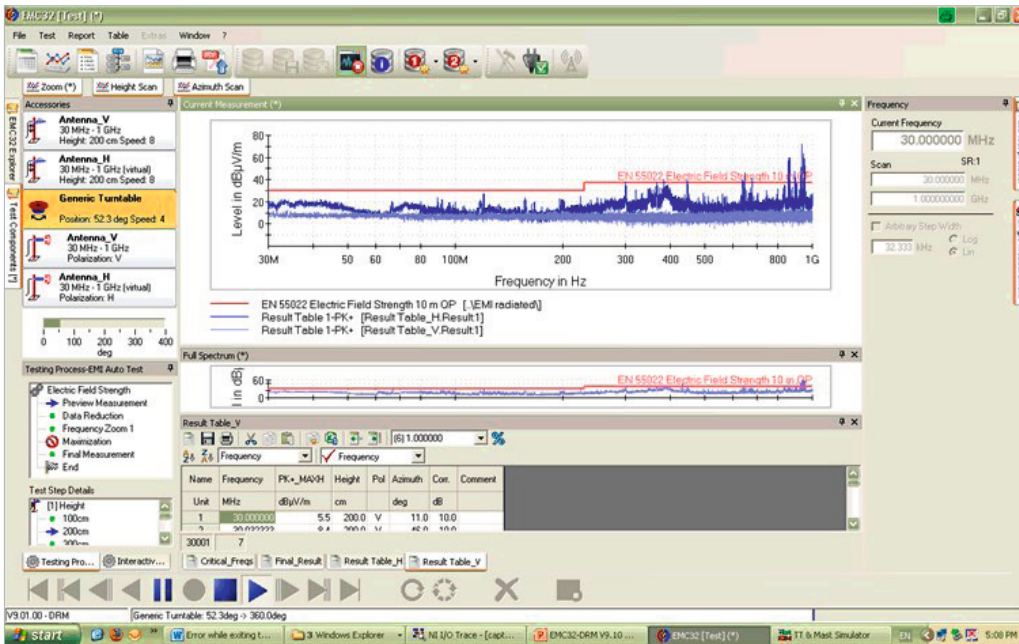
The R&S®EMC32-K27 software option makes it possible to automate measurements with little effort due to fixed antenna polarization while increasing the efficiency and reproducibility of the test run.

Reduced measurement time

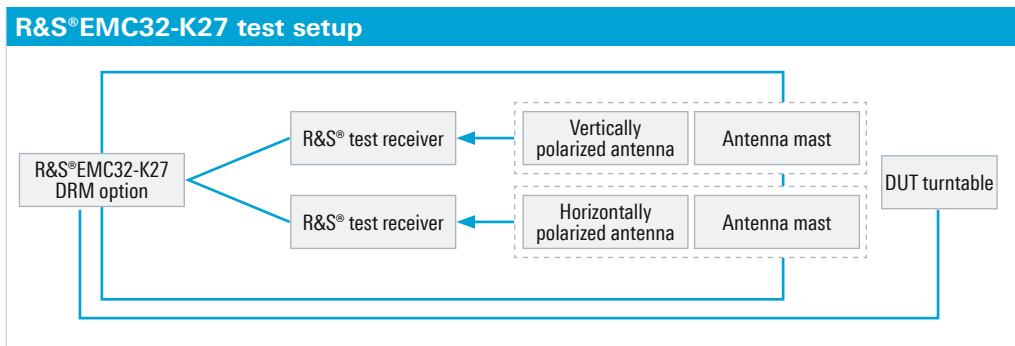
One of the most frequent requirements placed on measurement software to quickly perform the measurements and analyze the data. When every antenna is connected to its own receiver, individual test sequences for horizontal and vertical polarization are eliminated since measurements can be performed simultaneously with dual receivers. R&S®EMC32-K27 significantly reduces the measurement time of radiated EMI tests by 50% to 80%, allowing users to choose between fast measurements with low resolution and slow measurements with high resolution.

Antenna angle offset

The antenna angle offset feature simplifies calibration by correcting the position offset. This user-configurable feature makes it very practical for the software to be used for measurements in EMC chambers with space constraints and an angle limit of -90° to $+90^\circ$, reducing the need for manual calibration.



R&S®EMC32 software automatically prompts users to change the antenna position.



Easy configuration

It is easy to configure the settings needed to receive the parameters of the disturbance signal from an EMI test performed using the dual receiver measurement option via the R&S®EMC32 application. It is simply a matter of hardware configurations, test method configurations and step-by-step interactive measurements for DRM. This enables users to seamlessly configure the R&S®EMC32-K27 software option from the basic software package.

Data merging

In the automated test, the R&S®EMC32-K27 software automatically sets the polarity, antenna mast height and turntable position. This allows the sweep data from the two receivers to be saved separately and merged together before data reduction takes place, improving the efficiency of the measurements.

Ordering information

Designation	Type	Order No.
Dual Receiver Measurement (DRM)	R&S®EMC32-K27	5601.0324.02
To run the R&S®EMC32-K27 option, the R&S®EMC32-EB and R&S®EMC32-K10 options are required.		



北京海洋兴业科技股份有限公司 (证券代码: 839145)

北京市西三旗东黄平路19号龙旗广场4号楼 (E座) 906室

电话: 010-62176775 62178811 62176785

企业QQ: 800057747 维修QQ: 508005118

企业官网: www.hyxyq.com

邮编: 100096

传真: 010-62176619

邮箱: market@oitek.com.cn

购线网: www.gooxian.com



扫描二维码关注我们

查找微信公众号: 海洋仪器