

# Weller<sup>®</sup> FT

FILTER SYSTEMS



LASERLINE 150



MG140

使用说明书



致力于电子测试、维护领域!

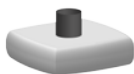


## LASERLINE 150

FT-L-15



150-4000  
F7



150-2012-L

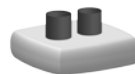


## MG140

145-1000-ESD



145-4000  
F7



145-2000-ESD



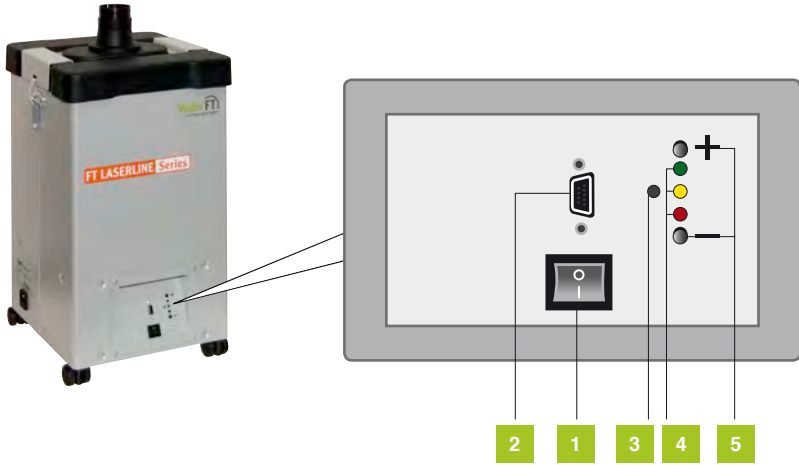
## MG140

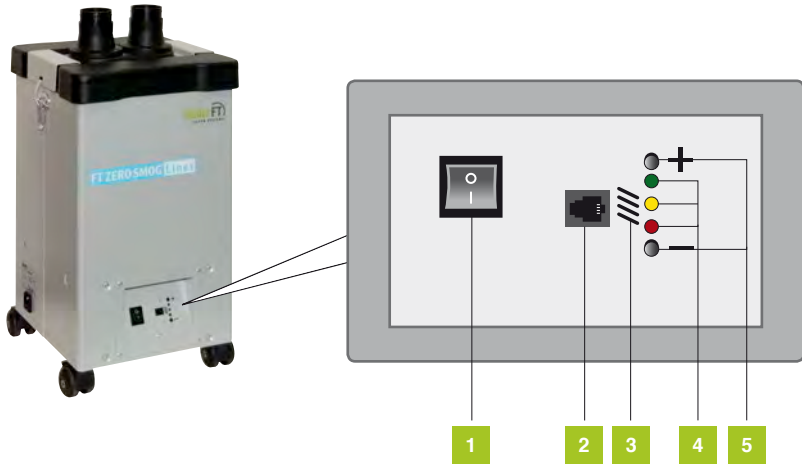
33507



配件

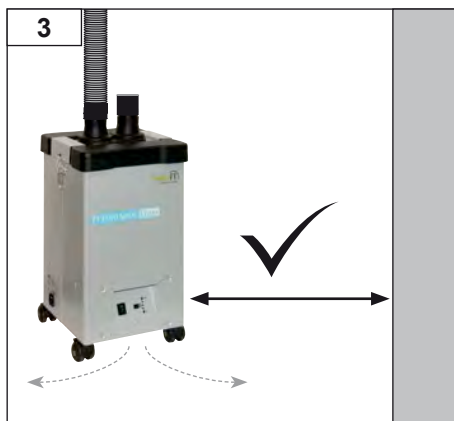
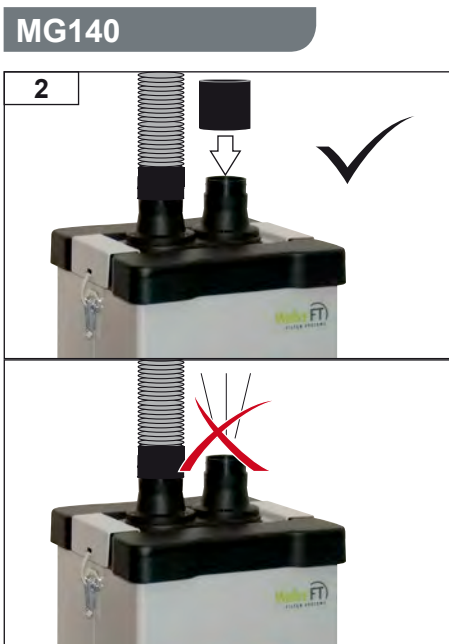
# LASERLINE 150



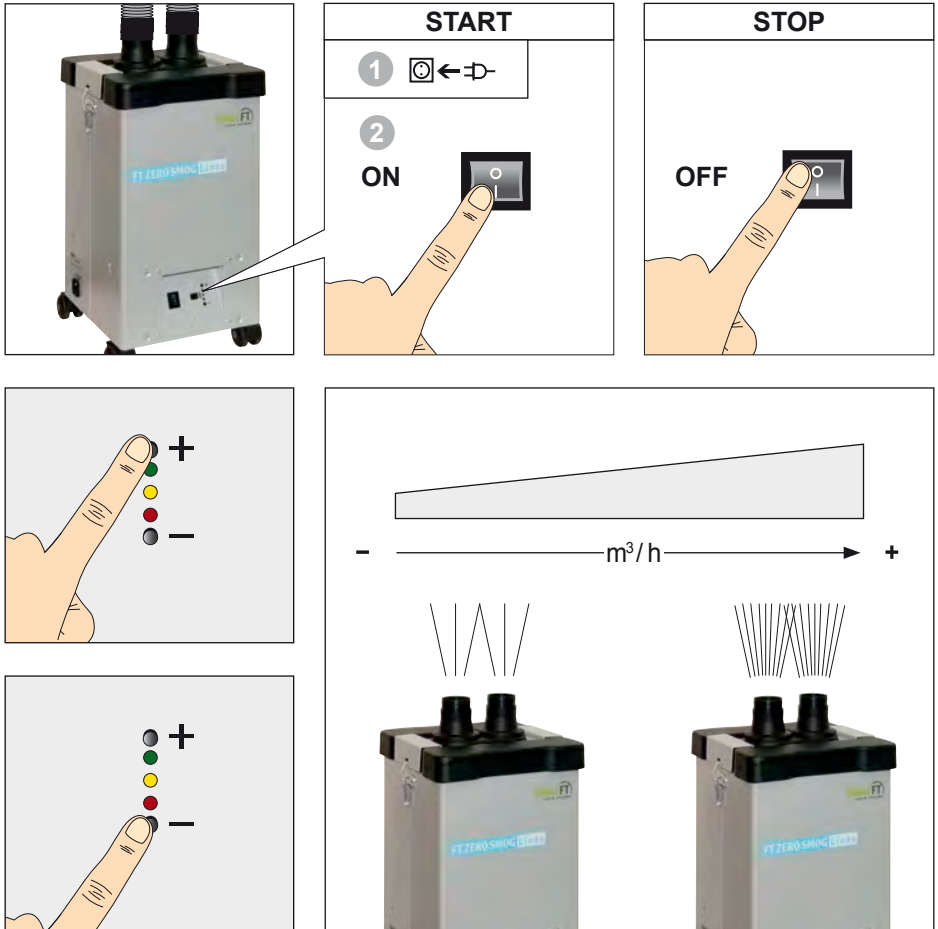


- 1 开关按钮
- 2 电源接口
- 3 声音信号
- 4 过滤器显示
- 5 警报-复位按钮/调节旋钮

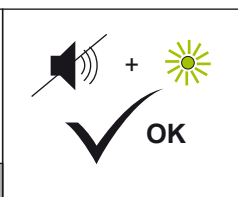
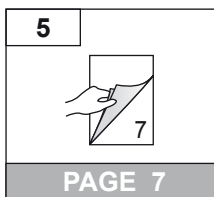
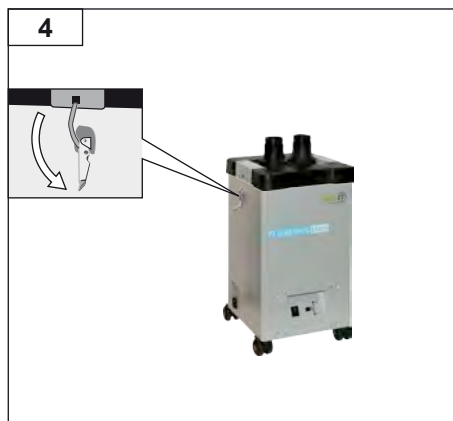
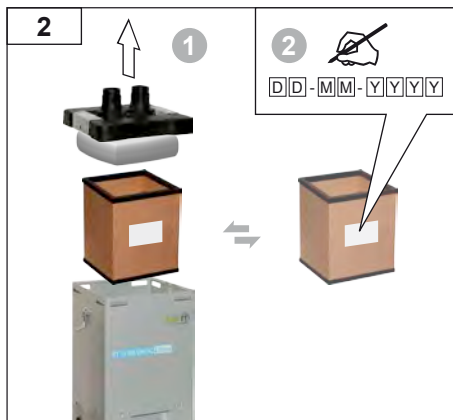
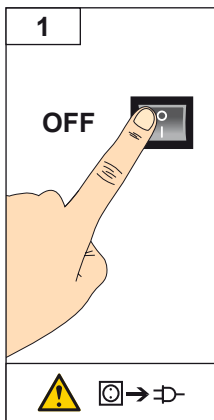
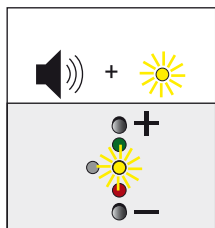
# 调试



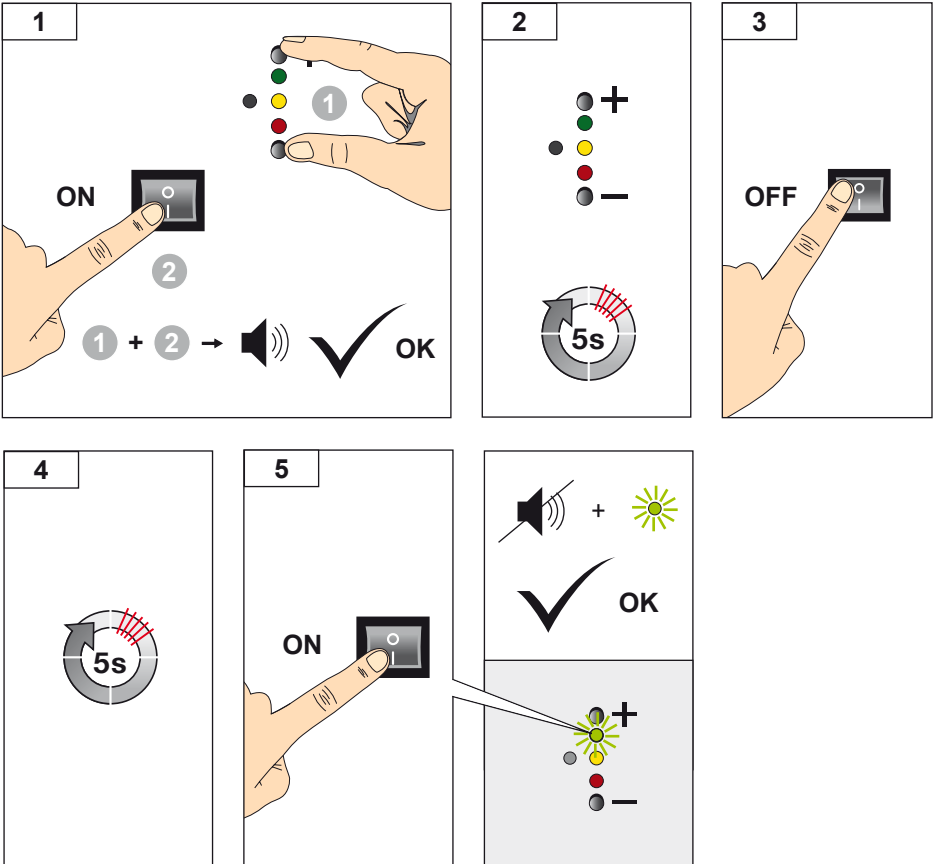
# 运行



# 筛选显示, 运行时间

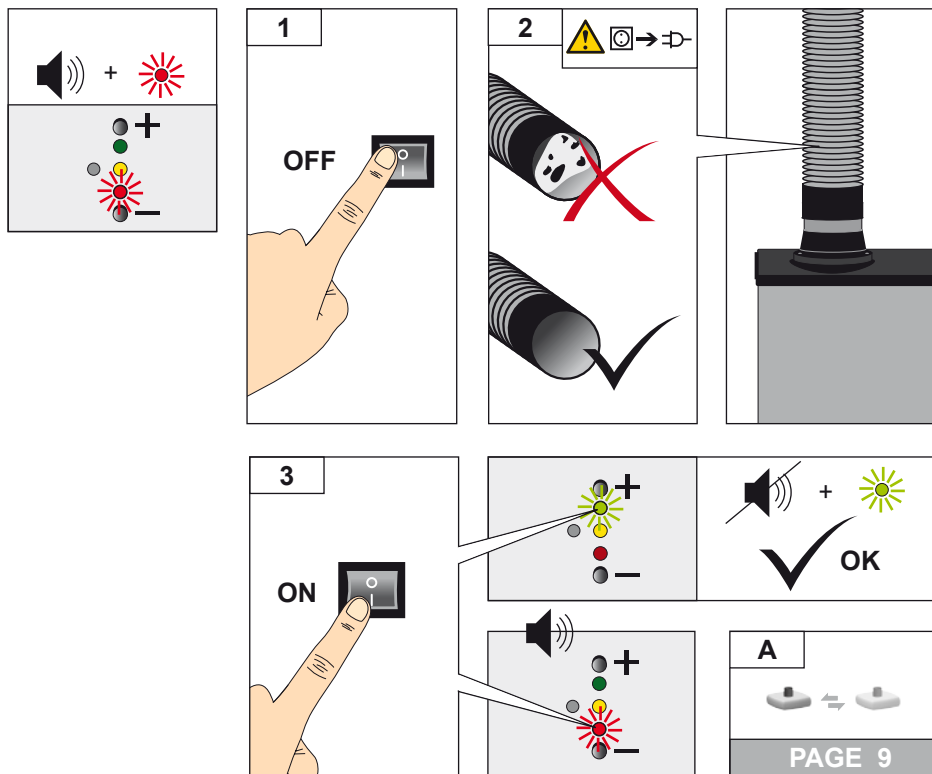


# 复位滤波时间

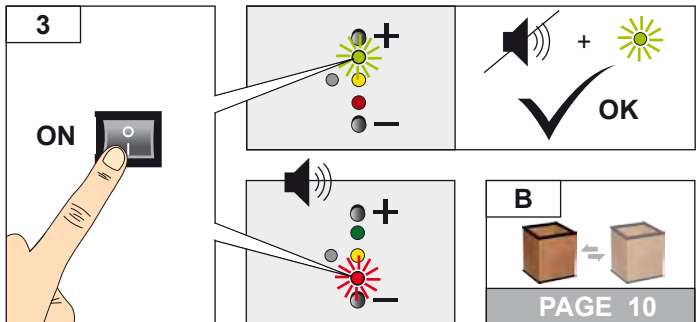
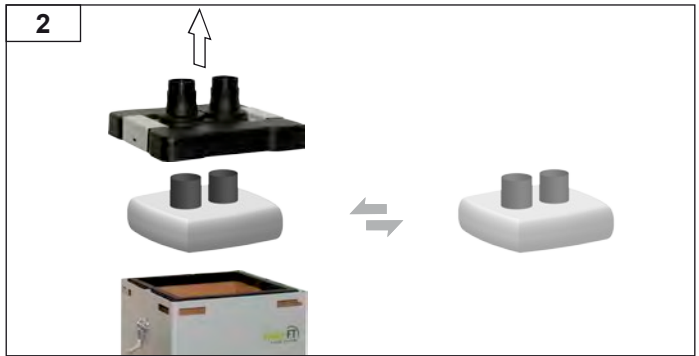
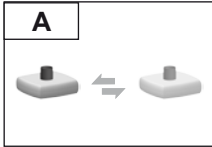




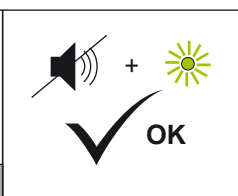
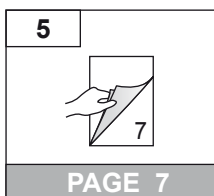
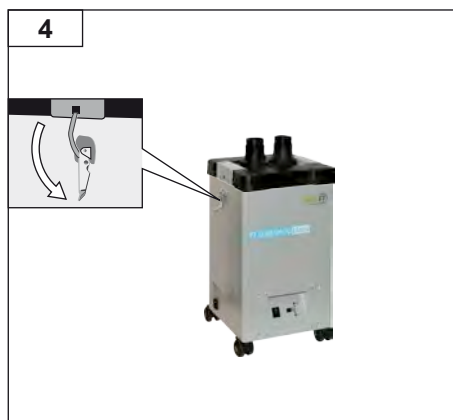
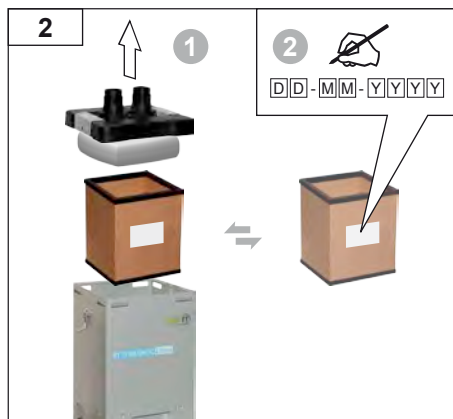
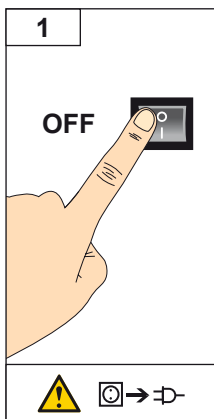
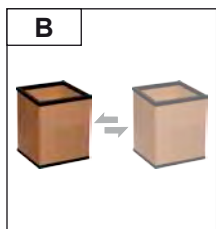
# 提取容量过滤显示



# 改变预滤器



# 改变主滤清器



# For your safety

GB



**Read these instructions and the accompanying safety information carefully before starting up the device and starting work with the device.**

Keep these instructions in a place that is accessible to all users.

Thank you for the confidence you have shown in buying this device.

The device has been manufactured in accordance with the most rigorous quality standards which ensure that it operates perfectly.

These instructions contain important information which will help you to start up, operate and service the device safely and correctly as well as to eliminate simple faults and malfunctions yourselves.

Always pass on the device to third parties together with these operating instructions.

The device has been manufactured in accordance with state-of-the-art technology and acknowledged regulations concerning safety.

There is nevertheless the risk of personal injury and damage to property if you fail to observe the safety information set out in the accompanying booklet and the warnings given in these instructions.

## Safety information

This appliance can be used by children aged from 8 years and above and persons with reduced physical, sensory or mental capabilities or lack of experience and knowledge if they have been given supervision or instruction concerning use of the appliance in a safe way and understand the hazards involved. Children shall not play with the appliance.

Cleaning and user maintenance shall not be made by children without supervision.



### Warning! Electrical shock

If the device is faulty, active electrical conductors may be bare or the PE conductor may not be functional.

- Repairs must always be referred to a Weller-trained specialist.
- If the electrical tool's power supply cord is damaged, this must be replaced with a specially prefabricated power supply cord available through the customer service organisation.



### Warning! Danger of injury

The device or parts of the device may fall off during transportation.

- Never use the device as a means of transportation.



### Warning! Danger of asphyxiation, Danger of poisoning

Improper installation can result in above-normal workplace concentrations

The organisation operating the unit is responsible for the observance of the legal limits for noxious substances at the place of work.

- Measure the workplace concentration upon completion of installation work

Inappropriate maintenance cycles for gas media may result in above-normal workplace concentrations

- Specify maintenance cycle

Above-normal contamination levels in the ambient air during cleaning work on the pipe system/extraction area

- If suction capacity is impaired by build-up within the pipe system, replace the contaminated parts

## Specified Conditions Of Use

### Applied directives

The Weller Zero Smog volume fume extraction system extraction unit corresponds to the EC Declaration of Conformity in accordance with the basic safety requirements of Directives 2004/108/EC, 2006/95/EC and 2011/65/EU (RoHS).

The manufacturer will not be liable for unauthorised modifications to the device.

The filtration system may only be put into operation if it is in perfect working order.

The solder fume extraction unit is a mobile filter unit for the separation of particulates and gases. The unit is used for the filtration of exhaust air during soldering, gluing, cleaning, pressure processes etc., and is suitable for continuous duty in industrial environments.



### Warning! Danger of asphyxiation, Danger of poisoning

Improper use may result in respiratory problems, asphyxiation, poisoning or cancer

- Particles and gases which are unsuitable for the filter medium in use may not be extracted.
- Liquids and flammable gases may not be extracted
- Never use the device without a filter or with a full filter.
- Never use the device without the fan cover

The unit is designed for use as a surface extraction unit and is not suitable for extracting fumes directly from the soldering gun.

This device may only be used at room temperature and indoors. The unit must not be exposed to temperatures above 50°C, naked flame or condensed solvents.

Intended use of the soldering station/ desoldering station also includes the requirement that you

- adhere to these instructions,
- observe all other accompanying documents,
- comply with national accident prevention guidelines applicable at the place of use.

## User groups

Due to differing degrees of risk and potential hazards, several work steps may only be performed by trained experts.

| Work step   | User groups   |
|---|---|
| Installation of complex pipe systems with multiple extractor arms connected   | Specialist personnel with technical training                              |
| Replacing electrical replacement parts  | Electricians  |
| Specification of maintenance intervals  | Safety expert   |
| Operation<br>Filter change  | Non-specialists   |
| Installation of complex pipe systems with multiple extractor arms connected<br>Replacing electrical replacement parts | Technical trainees under the guidance and supervision of a trained expert |

## Technical Data

| Extraction unit                         | Laserline 150   | MG140   |
|---|---|---|
| Dimensions L x W x H                    | 340 x 340 x 680 mm<br>13.4 x 13.4 x 26.8 inch   | 340 x 340 x 680 mm<br>13.4 x 13.4 x 26.8 inch   |
| Weight                                  | 18 kg   | 18 kg   |
| Maximum quantity supplied               | 140 m <sup>3</sup> /h (82,3 CFM)  | 140 m <sup>3</sup> /h (82,3 CFM)  |
| Maximum vacuum                          | 2.300 Pa  | 2.300 Pa  |
| Power consumption                       | 100 W   | 100 W   |
| Mains supply voltage                    | 110-240 V 50/60 Hz  | 110-240 V 50/60 Hz  |
| Glass tube fuse (5 x 20)                | 2 x 6,3 AT, 250 V   | 2 x 6,3 AT, 250 V   |
| Operating sound level from 1 m distance | < 50 dB(A)  | < 50 dB(A)  |
| Combined filter                         | Combined H13 high efficiency submicron filter (99.95 % particle separation upto 0.12 µm) and wide band gas filter (100 % AKF, 50 % Chemisorb) | Combined H13 high efficiency submicron filter (99.95 % particle separation upto 0.12 µm) and wide band gas filter (50% AKF, 50 % Chemisorb) |
| Interface                               | The full range of system functions can be operated and remotely monitored via the interface using an optional interface adaptor.              | For remote control  |

## Operation

### Notice

The unit may emit dust from the main filter after transportation. Make sure that the unit is put into service in a suitable room.

### Caution!

A high noxious gas concentration will cause the activated charcoal to heat up. To avoid overheating, the unit should be run without noxious gases for several minutes before switching off.

Put the tool into operation as described in the chapter „Placing into operation“.

Please adhere to the operating instructions of the connected devices.

Check to see if the mains voltage matches the ratings on the nameplate.

Make sure the machine is switched off before plugging in.

Optimal gas filtration is achieved as follows:

- Temperature of process air in gas filter < 38 °C
- Relative humidity < 60 %
- Gas molecules > 30 g/mol (better filtration results are achieved with larger molecules)
- Boiling point of the gas molecules > 0 °C

## Filter change



### Warning!

Before doing any work on the machine, pull the plug out of the socket.



### Warning!

Use original replacement parts only.  
The unit must not be altered or modified in any way!  
Repairs must always be referred to a Weller-trained specialist.

MIN 1x



The normal service life of a main filter in the electronics industry is 1500 hours.

The main filter should be changed at least once a year in order to ensure proper gas separation.

*Contaminated filters must be treated as special waste.*

*Dispose of replaced equipment parts, filters or old devices in accordance with the rules and regulations applicable in your country.*

Wear suitable protective gear.

The normal service life of a main filter in the electronics industry is 1500 hours.

The main filter should be changed at least once a year in order to ensure proper gas separation.

The degree of clogging of the filter is determined by differential pressure measurement. The filter display indicates the current condition of the filter.

**An alarm sounds and the yellow warning light flashes:** Recommended service life of filter has expired. (see Operating time filter display/Extraction capacity filter display)

**An alarm sounds and the red warning light is lit continuously:** Extraction capacity is too low. Switch off the filter unit. Check the nozzles, tubes and extractor arms, and clean them if necessary. If the alarm sounds again the next time the unit is turned on, the filter must be changed.

If no action is taken, the filter unit will cut out after five minutes in order to avoid overheating.

When changing the main filter the filtration time can be reset as follows:

Keep the UP/DOWN buttons pressed and, at the same time, turn on the switch until an audible signal sounds. Release the buttons, wait 5s and turn the unit off. Wait another 5s and turn the unit on. Filtration time is now reset.

## Cleaning

To ensure that the unit functions properly, the nozzle, extractor arm and connecting hose must be cleaned on a regular basis.

## Error messages and error clearance

| Message/symptom            | Possible cause                                       | Remedial measures   |
|----------------------------|--|---|
| ■ Extraction power missing | ■ Pipe system leaking                                | ■ Reseal the pipe system  |
|                            | ■ Filter is dirty                                    | ■ change the filter   |
|                            | ■ Turbine speed too low                              | ■ Increase the speed setting  |
| ■ Loud extraction noises   | ■ Air speed through extraction-arm is too high speed | ■ Reduce the air speed (reduce air quantity)  |
| ■ Unit is not running      | ■ Thermally switched off                             | ■ Leave the unit to cool down. Switch on again after approx. 3 hours.   |
| ■ Device does not work     | ■ Fuse is blown                                      | ■ Please contact our Customer Service: <a href="mailto:technical-service@weller-tools.com">technical-service@weller-tools.com</a> |
|                            | ■ Unit is not properly connected                     | ■ Check the electrical connections  |

## Original declaration of conformity

We hereby declare that the products described herein comply with the following guidelines:  
2011/65/EU (RoHS), 2004/108/EG, 2006/42/EG

Applied harmonised standards:

EN 55 014-1: 2012-05

EN 55 014-2: 2009-06


EN 61 000-3-2: 2010-03/2011-06

EN 61 000-3-3: 2012-07

EN 60 335-1: 2012-10

EN 60 335-2-45: 2012-08

EN 62233: 2008-11/2009-04

 Besigheim LL 26.11.2013  
MG140 8.8.2012



T. Fischer  
Technical director



S. Hofmann  
Managing director

Authorised to compile technical documentation.

Weller Tools GmbH  
Carl-Benz-Straße 2, 74354 Besigheim, Germany

## Warranty

Claims by the buyer for physical defects are time-barred after a period of one year from delivery to the buyer. This does not apply to claims by the buyer for indemnification in accordance with §§ 478, 479 BGB (German Federal Law Gazette).

We shall only be liable for claims arising from a warranty furnished by us if the quality or durability warranty has been furnished by use in writing and

using the term „Warranty“.

Claims under warranty will be accepted by Weller.

The warranty shall be void if damage is due to improper use and if the device has been tampered with by unauthorised persons.

**Subject to technical alterations and amendments.**

**For more information please visit [www.WellerFT.com](http://www.WellerFT.com).**

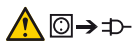
## Symbols



Caution!



Read the operating instructions!



Before performing work of any kind on the unit, always disconnect the power plug from the socket.



ESD-compatible design and  
ESD-compatible workstation



CE mark of conformity



## Disposal

Do not dispose of electric tools together with household waste material! In observance of European Directive 2012/19/EU on waste electrical and electronic equipment and its implementation in accordance with national law, electric tools that have reached the end of their life must be collected separately and returned to an environmentally compatible recycling facility.

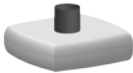
Contaminated filters must be treated as special waste.

Dispose of replaced equipment parts, filters or old devices in accordance with the rules and regulations applicable in your country.



# 附件

## Laserline 150

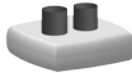


150-4000  
F7



150-2012-L

## MG140



145-4000  
F7



145-2000-ESD



700-3057



700-3070

## Easy-Click 60



Ø 75 -> Ø 60  
T0058762771



T0058762765



T0058735845



T0053657899



T0058762769



T0058762755



T0058762767



T0053657399



T0053657899



T0058762750



T0053657499



T0058762774



T0053657799



T0053658099



T0058762768



T0058762772



T0058762766