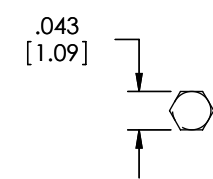
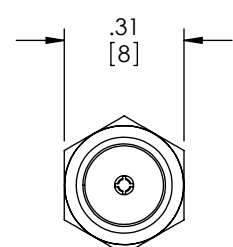
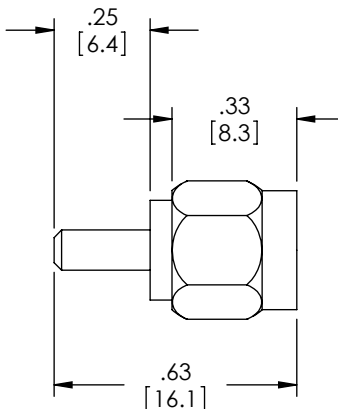


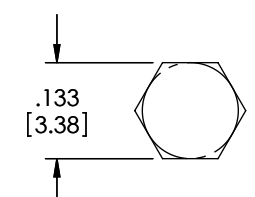
THE INFORMATION CONTAINED IN THIS DRAWING IS THE SOLE PROPERTY OF L-COM, INC. ANY REPRODUCTION IN PART OR WHOLE WITHOUT THE WRITTEN PERMISSION OF L-COM, INC. IS PROHIBITED.

DESCRIPTION	MATERIAL	FINISH
BODY	BRASS	GOLD
CONTACT	BeCu	GOLD
INSULATOR	PTFE	---
FERRULE	BRASS	GOLD
SHELL	BRASS	GOLD
SHRINK TUBE	PE	---

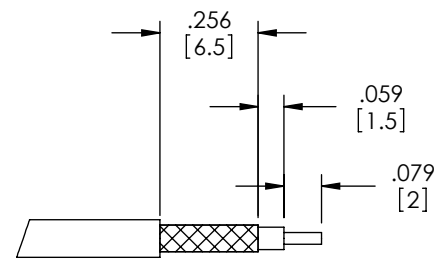
REVISIONS			
REV	DESCRIPTION	DATE	APPROVED
E	ECN 3155: UPDATE DWG FORMAT	1/18/08	D.GRIFFIN
F	ECN 5064: UPDATED PER NEW SUPPLIER SPEC.	10/5/10	D. CASTRO



RECOMMENDED
PIN CRIMP



RECOMMENDED
FERRULE CRIMP



RECOMMENDED
CABLE STRIPPING
DIMENSIONS


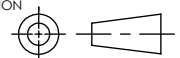
NOTES:

ELECTRICAL:
IMPEDANCE: 50 OHMS
INSULATOR RESISTANCE: 5000 MEGOHMS MIN.
DIELECTRIC WITHSTAND VOLTAGE: 750 VRMS MIN.
VSWR: 0 ~ 6 GHz 1.3 MAX.

MISCELLANEOUS:
CONNECTOR SHALL BE INDIVIDUALLY PACKAGED IN ACCORDANCE WITH L-COM SPECIFICATION PS-0031.

ALL DIMENSIONS ARE FOR REFERENCE ONLY.

RoHS Compliant ✓

UNLESS OTHERWISE SPECIFIED, DIMENSIONS ARE IN INCHES [mm] OVERALL CABLE LENGTH TOLERANCE: ≤12 [305] = +1 [25] / -0 >12 [305] ≤60 [1524] = +2 [51] / -0 >60 [1524] ≤120 [3048] = +4 [102] / -0 >120 [3048] ≤300 [7620] = +6 [152] / -0 >300 [7620] = +3% / -0% ALL OTHER DIMENSIONAL TOLERANCES: .X = ±.2 .XX = ±.02 .XXX = ±.005	APPROVALS	DATE	 45 BEECHWOOD DRIVE NORTH ANDOVER, MA 01845	
	DRAWN BY C.MCCORMICK	12/05/2002		
	CHECKED BY D.PARHAM	12/05/2002	CATEGORY COAXIAL	
	APPROVED BY R.CARRICK	12/05/2002	PRODUCT DESCRIPTION COAX CRIMP REV-POL SMA M	
PROJECTION 	COLOR VARIATIONS MAY OCCUR		SIZE A	FSCM NO. 43321
		SCALE: NONE	CAD FILE: BAC502.SLDDRW	DWG. NO. BAC502
		SHEET 1 OF 1		REV. F