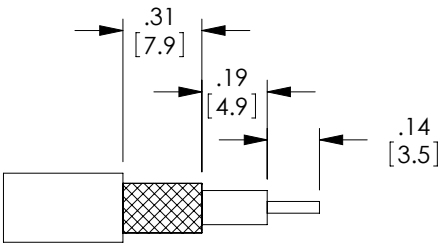
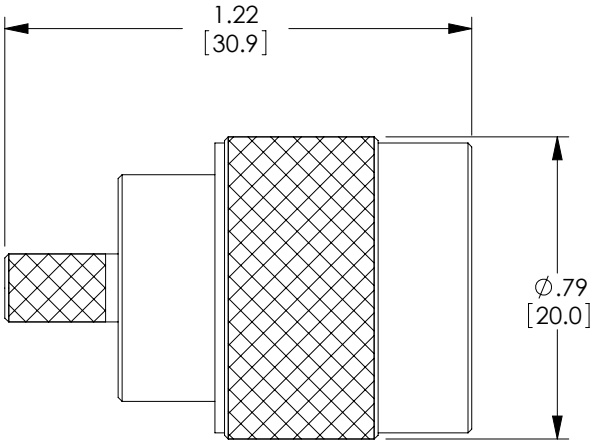


8 7 6 5 4 3 2 1

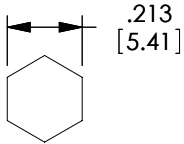
THE INFORMATION CONTAINED IN THIS DRAWING IS THE SOLE PROPERTY OF L-COM, INC.. ANY REPRODUCTION IN PART OR WHOLE WITHOUT THE WRITTEN PERMISSION OF L-COM, INC. IS PROHIBITED.

REVISIONS			
REV	DESCRIPTION	DATE	APPROVED
A	INITIAL RELEASE	10/26/06	P.PESA
B	ECN 5251: UPDATE DRAWING FORMAT, NOTES, PACKAGING	1/14/11	D.FRISIELLO

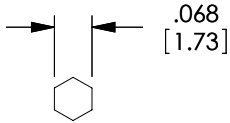
DESCRIPTION	MATERIAL	FINISH
BODY	BRASS	NICKEL PLATE
DIELECTRIC	TFE	-
CENTER PIN	BRASS	GOLD PLATE
RETAINING RING	BRASS	NICKEL PLATE
GASKET	RUBBER	-
FERRULE	BRASS	NICKEL PLATE



RECOMMENDED  
CABLE STRIPPING



RECOMMENDED  
FERRULE CRIMP



RECOMMENDED  
CONTACT CRIMP

NOTES:

ELECTRICAL:  
IMPEDANCE: 50 OHMS  
FREQUENCY RANGE: DC ~ 6 GHz  
VOLTAGE RATING: 1500 VOLTS PEAK  
DIELECTRIC WITHSTANDING VOLTAGE: 2500 VOLTS RMS  
CABLE RETENTION: 30 LBS PULL  
APPLICATIONS: RG58, LMR195

PACKAGING:  
COMPONENT SHALL BE INDIVIDUALLY PACKAGED IN ACCORDANCE WITH L-COM SPECIFICATION PS-0031.

RoHS Compliant ✓

UNLESS OTHERWISE SPECIFIED, DIMENSIONS ARE IN INCHES [mm] OVERALL CABLE LENGTH TOLERANCE: ≤12 [305] ≤+1 [25] / -0 >12 [305] ≤60 [1524] = +2 [51] / -0 >60 [1524] ≤120 [3048] = +4 [102] / -0 >120 [3048] ≤300 [7620] = +6 [152] / -0 >300 [7620] = +3% / -0% ALL OTHER DIMENSIONAL TOLERANCES: .X = ± .2 .XX = ± .02 .XXX = ± .005 PROJECTION 	APPROVALS	DATE	 45 BEECHWOOD DRIVE NORTH ANDOVER, MA 01845	
	DRAWN BY D.FRISIELLO	1/11/11		
	CHECKED BY K.BURGNER	1/11/11	CATEGORY COAXIAL	
	APPROVED BY K.BURGNER	1/11/11	PRODUCT DESCRIPTION TYPE N RP PLUG CRIMP, LMR195/RG58	
CONFIGURATION DETAILS OF UNDIMENSIONED FEATURES MAY VARY		SIZE A	FSCM NO. 43321	DWG. NO. ARNP-1700
COLOR VARIATIONS MAY OCCUR		SCALE: NONE	CAD FILE: ARNP-1700.SLDDRW	REV. B
		SHEET 1 OF 1		